

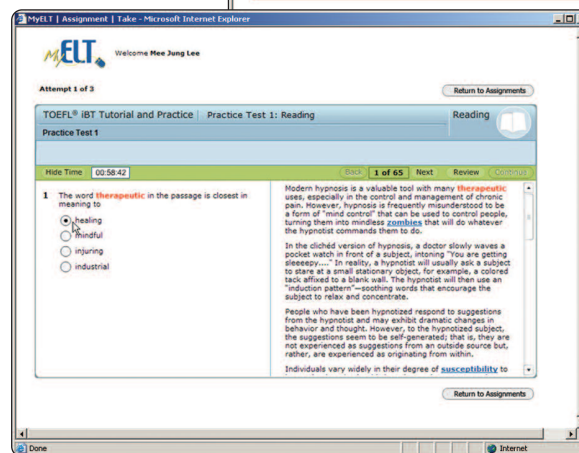
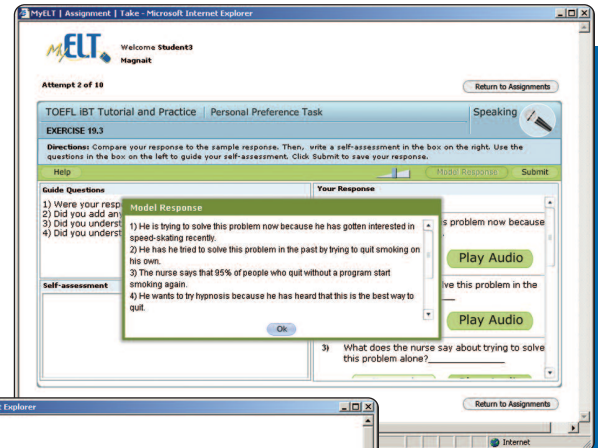


Prepare for the TOEFL® iBT—online!

Online Tutorial for the TOEFL® iBT combines innovative technology with a unique learning pedagogy to prepare students for TOEFL® exam success.

- ▶ An electronic diagnostic test individually assesses each student and creates a **Customized Learning Plan**.
- ▶ Using speech recognition technology, **Speaking Practice** identifies errors in sound, rhythm, and pitch of speech so students can focus on improving pronunciation.
- ▶ **Automated essay scoring** provides consistent, accurate, and immediate diagnostic feedback.
- ▶ **Reading and Listening Exercises** help students improve comprehension with extensive strategies and practice.
- ▶ **Interactive Vocabulary** is highlighted throughout practice tests. Students may place the cursor on a bolded word to reveal a definition.
- ▶ **Test-Taking Strategies** at the end of each lesson help students overcome test-taking obstacles.
- ▶ Students independently identify areas needing improvement through **self-assessment activities** in each section.
- ▶ **Answer key and tapescript** are available online.
- ▶ This program is **designed to complement** Bruce Rogers' best-selling TOEFL® iBT prep text or to be used for independent study.
- ▶ Students can participate as a **class or study independently** at their own pace.

To watch a demonstration, visit elt.heinle.com/technology.



Practice exercises based on each student's Customized Learning Plan

Simulates TOEFL® iBT test-taking experience

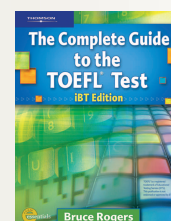
Components

Complete Edition (includes Speaking Course and Practice Tests)	978-1-4240-0939-8
Speaking Only	978-1-4240-1775-1
Practice Tests	978-1-4240-1774-4
Complete Edition/Complete Guide to the TOEFL® iBT Text/CD-ROM/Audio Pkg.	978-1-4240-9339-7
Speaking Only/Text/CD-ROM/Audio Pkg.	978-1-4240-9337-3
Practice Tests/Text/CD-ROM/Audio Pkg.	978-1-4240-9338-0

Pair Online Tutorial for the TOEFL® iBT with Bruce Roger's best-selling text for a multimedia approach!

The Complete Guide to the TOEFL® Test, iBT Edition

The instruction and practice in *The Complete Guide to the TOEFL® Test, iBT Edition* helps students master the skills necessary to achieve the best possible score on the TOEFL® iBT and to prepare for success in an academic environment.



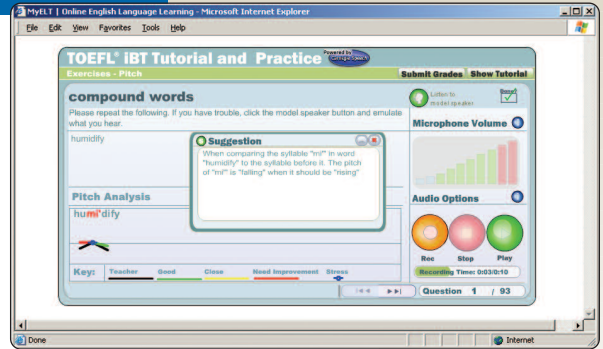
Written by Bruce Rogers, an internationally recognized authority on English language standardized test preparation

Online Tutorial for the TOEFL® iBT includes...

...interactive pronunciation exercises with speech-recognition technology.

Speaking activities, featuring speech recognition technology from Carnegie Speech, simulate the TOEFL® testing experience, preparing students for the new speaking portion of the test.

- ▶ Speech recognition technology identifies errors in sound, rhythm, and pitch of speech.
- ▶ Exact pinpointing clearly identifies where the error in speech occurred so students can focus on improving pronunciation.
- ▶ Meaningful, customized assessment provides suggestions for improvement.



Pronunciation practice with speech recognition technology



Improving Spoken English

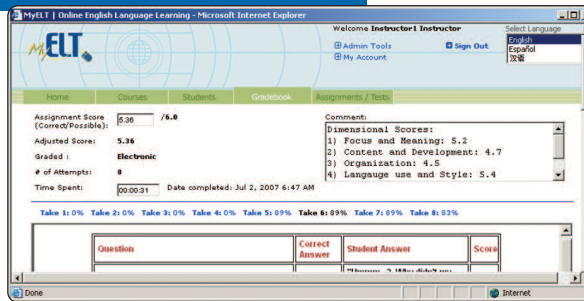
About Carnegie Speech

Carnegie Speech's technology pinpoints errors in the sounds, grammar, rhythm, pitch and fluency of the student's speech and provides individualized instruction that maximizes improvement and minimizes training time.

...state of the art technology that facilitates writing practice.

Using Vantage Learning's Intellemetric™ Within, **automated essay scoring** provides students and instructors with consistent, accurate, and immediate diagnostic feedback.

- ▶ Students may complete up to four practice essays.
- ▶ Detailed feedback provides the opportunity for self-assessment following the completion of the written essay.
- ▶ Essay writing and scoring process accurately simulates the TOEFL® test-taking experience.



Writing practice with automated essay scoring

About MyELT

MyELT is an Internet-based learning management system designed just for English language teachers and students. Instructors use MyELT to assign Heinle online learning content, set dates when students should start and finish assignments, and track student grades. Students use MyELT to complete the online activities, monitor their own learning progress, and review as necessary.

For more information, please visit elt.heinle.com/myelt.



Vantage Learning's Intellemetric™ Within

About Vantage Learning

Vantage Learning's IntelliMetric® automated essay scoring system administers and scores responses to constructed response and open-ended essay questions using advanced artificial intelligence technology.

For more information, please visit us at elt.heinle.com or contact your local representative.

Asia Main Office (Singapore)

Tel: 65-6410-1200
Fax: 65-6410-1208

China

Tel: 86-10-8286-2095
Fax: 86-10-8286-2089

Japan

Tel: 81-3-3511-4390
Fax: 81-3-3511-4391

Korea

Tel: 82-2-322-4926
Fax: 82-2-322-4927

Taiwan

Tel: 886-2-2558-0569
Fax: 886-2-2558-0360

Thailand

Tel: 66-2-6190433 /4/5
Fax: 66-2-6190436

Mexico & Central America

Tel: (52 55) 1500 6000
Fax: (52 55) 1500 6019
Toll Free: 01-800-800-3768

Brazil

Tel: (55 11) 36659931
Fax: (55 11) 36659901
Toll Free: 0800111939

Argentina, Bolivia, Chile, Paraguay, Peru & Uruguay

Tel: (54-11) 4582-0601 /7
Fax: (54-11) 4582-0087

Colombia, Ecuador & Venezuela

Tel: (571) 292 2040

Puerto Rico & Caribbean

Tel: (787) 641-1112
Fax: (787) 641-1119

UK / Europe / Middle East / Africa (EMEA) Main Office

Tel: +44 (0) 20-7067-2667
Fax: +44 (0) 20-7067-2600

India

Tel: (91) 11 3048 4837 /8
Fax: (91) 11 3048 4834

United States

Heinle
25 Thomson Place
Boston, MA 02210-1202
United States
Tel: 617-289-7700
Fax: 617-289-7844